

FEDERAL SUPPLY CLASS  
5120

**REV.  
B**

**AS22520™/1**

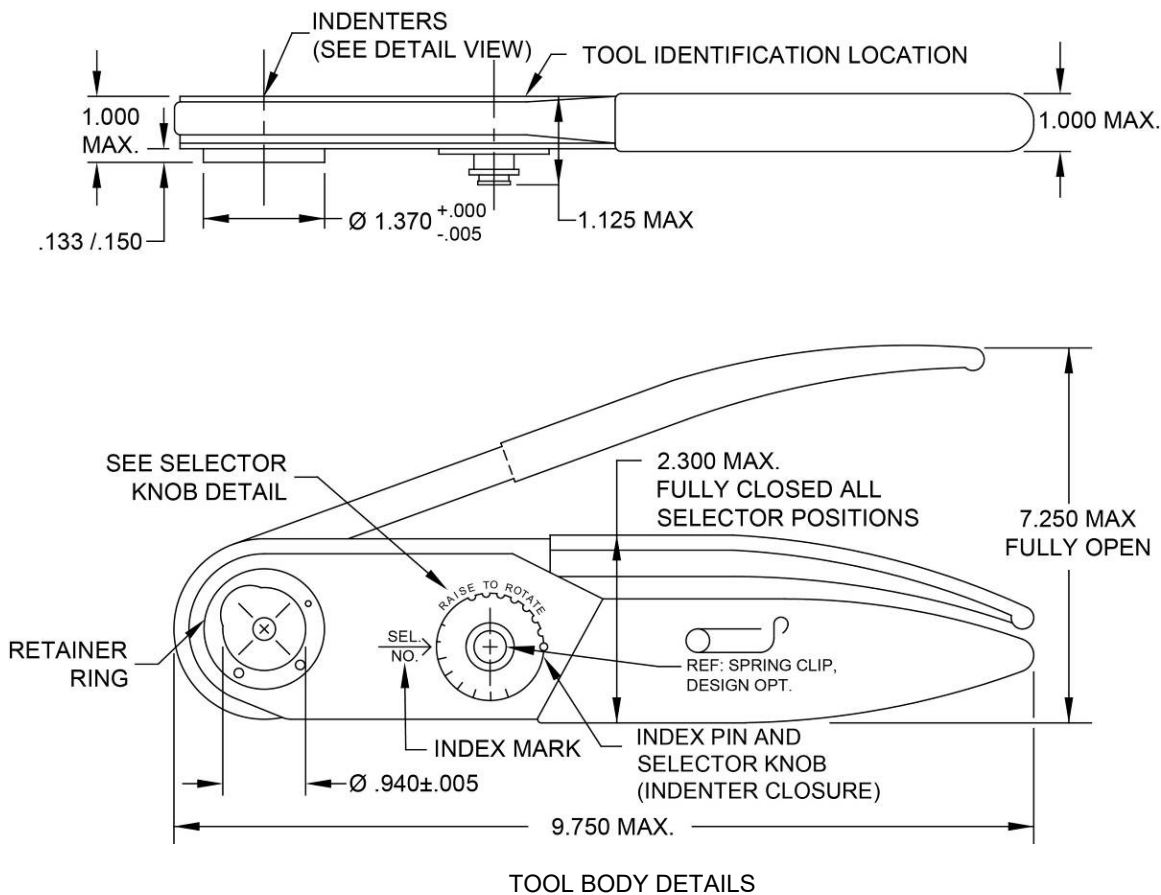
**RATIONALE**

LIMITED SCOPE REVISION REQUIRED TO ADDRESS THE INDEX LINE REQUIREMENT ON THE TURRET HEAD, THE AS22520/1-12 DATA PLATE, AND MINOR EDITORIAL CHANGES AS NEEDED.

**NOTICE**

THE COMPLETE REQUIREMENTS FOR PROCURING THE PRODUCT DESCRIBED HEREIN SHALL CONSIST OF THIS DOCUMENT AND THE LATEST ISSUE OF AS22520.

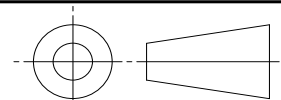
SAE Technical Standards Board Rules provide that: "This report is published by SAE to advance the state of technical and engineering sciences. The use of this report is entirely voluntary, and its applicability and suitability for any particular use, including any patent infringement arising therefrom, is the sole responsibility of the user." SAE reviews each technical report at least every five years at which time it may be revised, reaffirmed, stabilized, or cancelled. SAE invites your written comments and suggestions.



**FIGURE 1 - M22520/1-01 TOOL**

**SAE values your input. To provide feedback on this Technical Report, please visit <http://standards.sae.org/AS22520/1B>**

THIRD ANGLE PROJECTION



CUSTODIAN: AE-8C2

PROCUREMENT SPECIFICATION: AS22520



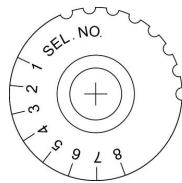
**AEROSPACE STANDARD**

CRIMPING TOOLS, TYPE I, TERMINAL, HAND, WIRE TERMINATION FOR WIRE BARREL SIZES 12 THROUGH 22 AND COAXIAL INNER CONTACTS

**AS22520™/1**  
SHEET 1 OF 42

**REV.  
B**

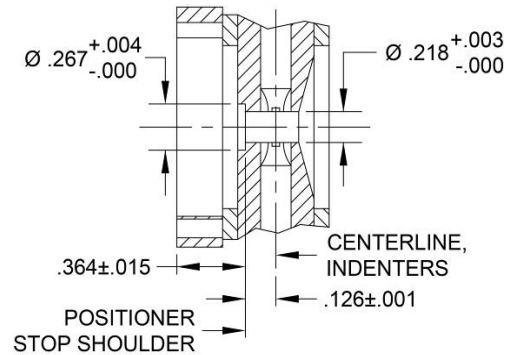
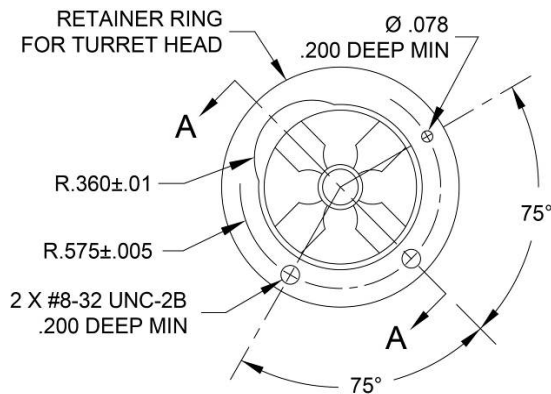
ISSUED 2015-05 REVISED 2019-03



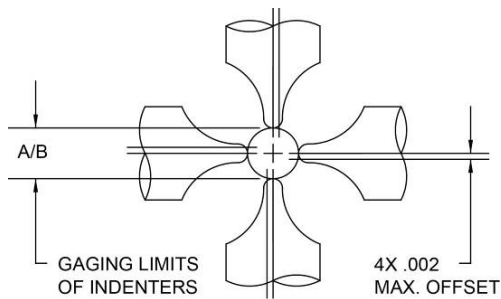
SELECTOR KNOB  
(INDENTER CLOSURE)

NOTE: THE LOCATION/CONFIGURATION IS OPTIONAL FOR THE INDEX MARK AND LATCHING MECHANISM, PROVIDING THAT IT CLEARLY DESIGNATES THE SELECTOR NUMBER POSITION, AND PROVIDES A STABLE LATCH SO THE SETTING WILL NOT CHANGE FROM NORMAL HANDING.

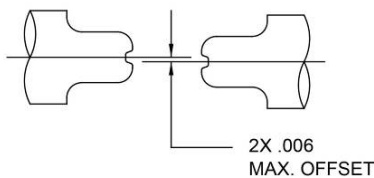
SELECTOR KNOB DETAILS (CONFIGURATION OPTIONAL)




SECTION A-A

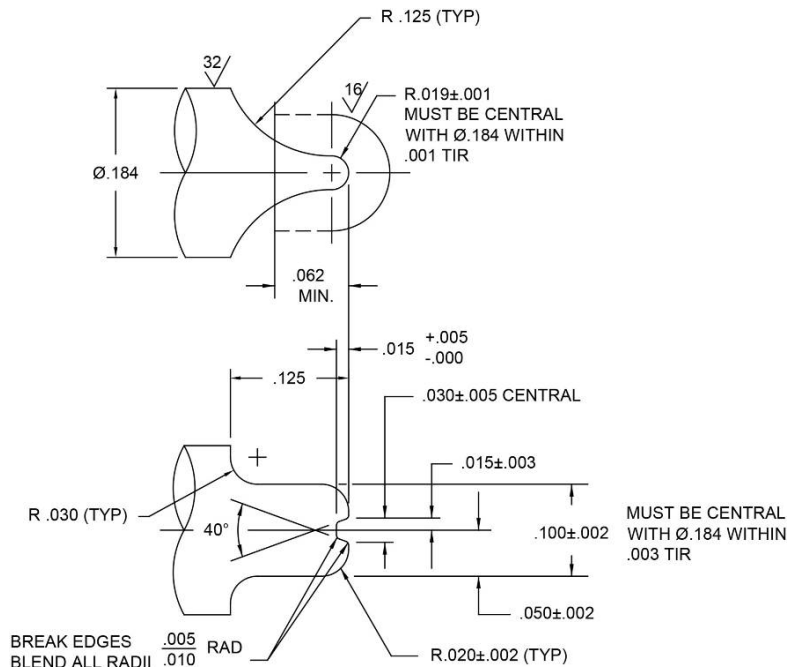


INDENTER LOCATIONS WITH TOOL  
IN FULLY CLOSED POSITION




OPPOSITE AND ADJACENT  
INDENTER CENTERLINES

	<b>AEROSPACE STANDARD</b>	<b>AS22520™/1</b> SHEET 2 OF 42	<b>REV.</b> <b>B</b>
	CRIMPING TOOLS, TYPE I, TERMINAL, HAND, WIRE TERMINATION FOR WIRE BARREL SIZES 12 THROUGH 22 AND COAXIAL INNER CONTACTS		



INDENTER

FIGURE 1 - M22520/1-01 TOOL (CONTINUED)

	<b>AEROSPACE STANDARD</b>	<b>AS22520™/1</b> SHEET 3 OF 42	<b>REV.</b> <b>B</b>
	CRIMPING TOOLS, TYPE I, TERMINAL, HAND, WIRE TERMINATION FOR WIRE BARREL SIZES 12 THROUGH 22 AND COAXIAL INNER CONTACTS		